

# architecture **Asia**

nature by design

Journal of the architects  
regional council asia (ARCASIA)  
issue 1  
January / February / March 2010

arcasia

**X2 Kuiburi Resort DBALP** **Alila Villas Uluwatu** **WOHA**  
**Kumar Residence** **Morphogenesis** **55 AC Office** **Archi-**  
**Centre Sdn Bhd** **Estate Bungalow Mathugama Narein**  
**Perera** **Sneak Peek** **Datum:KL 2010** **Norwegian**  
**Architects in Kuala Lumpur** **A Q&A with Sou Fujimoto**



ISSN 1075-5080

9 771675 688008

Architect Morphogenesis  
India

## Kumar Residence

of glass and light

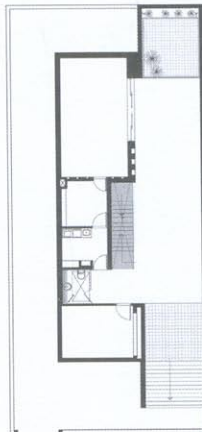
Etched with hard modernist lines but draped in ample historical references, the Kumar Residence by New Delhi-based firm Morphogenesis puts forth the idea of the home as a private retreat far away from the chaos of the bustling Indian metropolis.

Starkly modern in character, the design of the Kumar Residence paradoxically drew much inspiration from the architecture of Indian sanctuaries. Indian practice Morphogenesis particularly bore in mind a *haveli* or traditional mansion premised around private courts which also feature a step-well with an enfilade of semi-enclosed shaded spaces and a temple sanctum. A large opening dramatically punctuates the fortress-like entrance wall of the house, allowing one a glimpse into the entry courtyard. This forecourt, shaded by a tree rooted in a bed of white pebbles, establishes the minimalist mood of the residence. An orchestrated series of courts serve to divide and sculpt the space of the house. Rooms respond to the programme while boundaries are continuously defined by light and material. Even the main doors of the residence, which rise up to the full height of the rooms, aptly reinforce the prevailing sense of unhindered space.

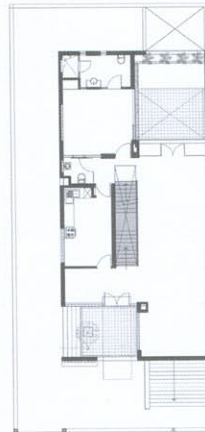
Interiors are animated by the shifts in light filtering through the sky-lit courts, changing up the feel of the space through the day and throughout the seasons. Each court presents an opportunity to stage a composition of materials, light, and foliage. Large picture windows and glass walls allow space to flow uninterrupted from the inside to the outside without the mediation of frames while cove lighting behind the floating ceiling in the living room bathe the walls in a gentle glow.

A poetic manipulation of materials acts as a contrast to the spare austerity of the interiors. Polished concrete, glass, polished ebony and stainless steel surfaces play off each other, bringing texture and lightness to the spaces. These materials also provide a tactile and sensual counterpoint to the white architectural surfaces. A pleated ebony staircase is contained within the sheets of glass that separate it, if only momentarily, from the living room. The curving wood-clad canopy in the living room captures the soft reflected light of the courtyard.

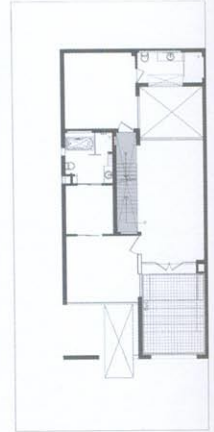
Rich details reference each other: stone-filled glass flooring in the terrace recalls the bed of white pebbles in the entry court while a square stone platform is set within pebbles in an interior court. Stainless steel, meanwhile, is used in unexpected ways; as a detail, it outlines a pattern in a mosaic. As an object, its existence is apparent in custom-designed fixtures and fenestration details. Woods as varied as walnut and wengé are juxtaposed to create a visual play on their individual grain and textural nuances. Bathrooms are bathed in muted light seeping through glass tiles stacked from floor to ceiling and reflecting from opaque glass ceilings overhead.



BASEMENT FLOOR PLAN



GROUND FLOOR PLAN



FIRST FLOOR PLAN





Location  
India  
Built up area  
450 sqm  
Plot size  
350 sqm  
Cost of project  
2 crores  
Date of completion  
2007

Architect  
Morphogenesis

Contractor  
CTCL  
Design Consultants  
Structure  
Vintech  
Electrical  
KKA  
Plumbing  
Saviram

Photographer  
Jatinder Marwaha

