

Atlas of World Architecture



77/32, Gurgaon

Located in Gurgaon, the office hub in the suburbs of New Delhi, the building moves away from the typical office typology, and provides an alternative with interweaving open social spaces and closed workspaces.

The design is envisaged with two types of informal spaces – one at the public level and the other at the individual office level. The ground floor is designed to be a recreational, informal meeting space which defines the entrance as well. A passive cooling strategy is adopted to create a modified environment which is non-air-conditioned. This is done through the creation of water bodies, and allows for built mass only on two sides and the remaining two sides are left open to allow for wind movement. A café is designed as a part of the recreation zone. Each individual office has been provided with a terrace garden which becomes its private, informal breakout zone.

To address the environmental issues that concern the contemporary office, orientation is optimised in the creation of built volumes. The East and West sun are blocked off with the help of solid stonewalls that act as a thermal buffer. The two long sides, north and south, are provided with glazing and punctures respectively. Each floor plate is designed to be fifteen metres wide to allow for daylight penetration. The use of post-tensioned beams allows for the creation of column-free spaces, which permits maximum flexibility within the office space.

New Delhi

India

Asia





Landscaped area



Informal breakout spaces



Entrance area



1. entrance
2. exit
3. food court
4. landscape garden
5. landscape court
6. reception
7. lift lobby

Photo: André J Fanthome

Corporate

Completion Date: 2009

Architect: Morphogenesis

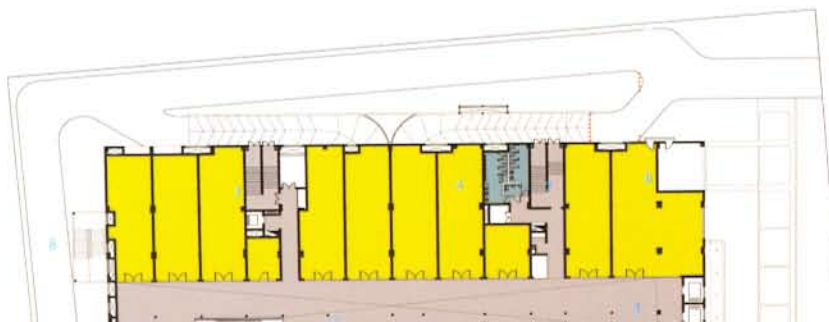


Exterior view

Centra Mall

Chandigarh is a city with a high degree of urbanisation and most of the commercial areas in Chandigarh are concentrated in specifically-designated sectors. Hence, there arises a need for developing other commercial centres within the city. The site for Centra Mall is located in the Industrial Sector on the most visible corner plot on the main sector road and there are excellent linkages from the airport, railway station and the residential and institutional areas of the city, thus making the site an extremely vital component of the city fabric.

The design intent for the mall has two predominant aspects viz. the socio-cultural aspect and the environmental strategy. Traditionally, malls have been approached with a Box-type morphology that excludes people and is not democratic in nature. Hence, the approach has been to reverse this morphology and open up the Box instead towards the site context and surroundings. The built form enclosure is straight-off the road and the design approach is directed towards providing a High Street nature to the mall which opens up. An atrium along the premium road access helps to attain the public disposition, whilst maintaining the mall typology. The retail shops and the entertainment block face the atrium and being wholly transparent, it allows visibility of all the shops from the road. State-of-the-art escalators and lifts allow for the vertical movement and build in pedestrian linkages inside the mall. The layout is extremely efficient with very low super area loading. There are two levels of basement with adequate parking and centralised building services.



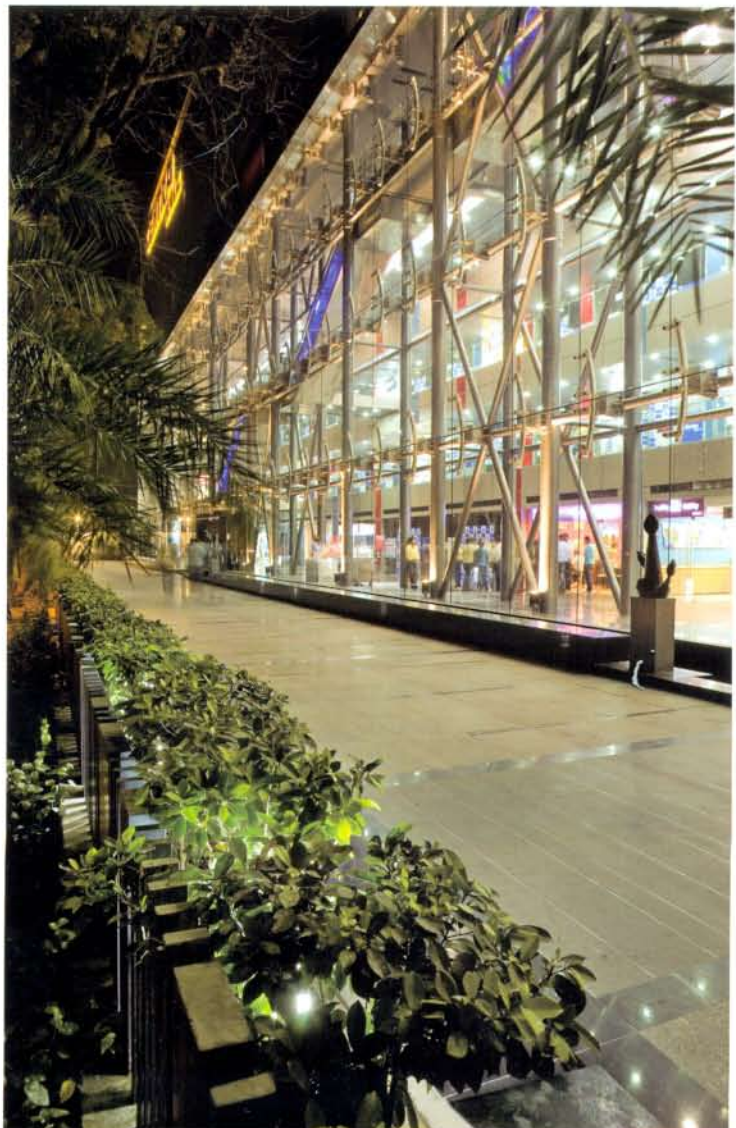
1. mall entrance
2. escalators
3. lift lobby



Escalator



Exterior view



Passageway

Photo: André J Fanthome

Architect: Morphogenesis

Commercial

Completion Date: 2008

India Glycols Limited

The office design for the corporate office for India Glycols embodies the issues concerning the workplace today, and explores the paradigm of the office space as a social activity. Sited in a non-contextual suburban area of Delhi, the setting led to the development of an introverted scheme that would address environmental and socio-economic issues from first principles.

As is the nature of most bespoke corporate developments, the building had to exemplify the brand identity and corporate ideology of equity and transparency in the workplace as an integral part of the architectural vocabulary. Conceived as a solid perimeter scheme with a more fluid interior, the morphology blurs the interface between the inside and outside. The built form optimises the natural day lighting and helps to define the programmatic requirements of the office. A stacking system is used to generate a variety of open spaces, such as courtyards, verandahs and terraces, which help to structure the office spaces. A central spine traversing the built volume serves as the common activity zone, with other departments branching out. The design's conceptual strength comes from the spatial organisation which creates overlaps between the exterior and the interior and between the various programmatic requirements, hence creating a vibrant and creative work environment.



Night view of the inner courtyard





Shaded outer façade with small slit windows



Exterior shot



Reception area



- 1. workstation
- 2. common spine
- 3. landscape greens
- 4. deck below