

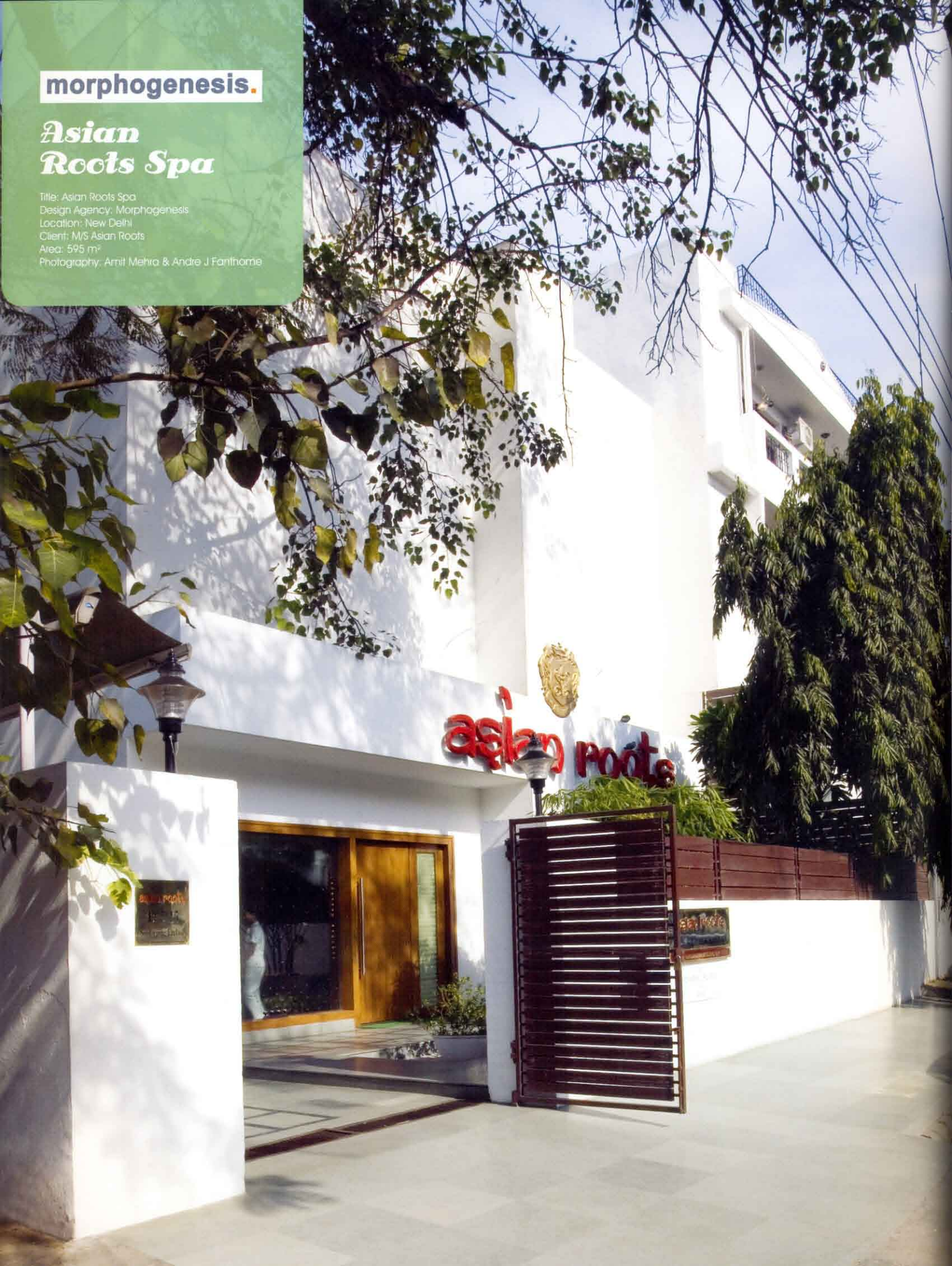
Hotel Spas & Beauty Spas / Wellness Centers Interior Design-Vol.2



morphogenesis.

Asian Roots Spa

Title: Asian Roots Spa
Design Agency: Morphogenesis
Location: New Delhi
Client: M/S Asian Roots
Area: 595 m²
Photography: Armit Mehra & Andre J Fanthorne





Introduction

Taking its inspiration from the birth of holistic treatments in Asian traditions the Asian Roots Spa is designed as a tranquil sanctuary. The spaces designed in a minimalist palette provide a serene sense of calm and well being. The entry to the spa is through a zen garden with a Japanese dry landscape garden or Karesansui forming the focus of the entry. A bottle palm forms an asymmetrical natural accent to the space. Wooden seats placed on a floating stone bench provide a place for contemplation in this soothing setting.

Entering through the wooden floored reception, one comes to the heart of the spa; a large triple-height atrium space. Light floods into the atrium diffused through blowing fabric through a skylight three floors above. The space overseen by a large wall painting of the Buddha links the spa at the various levels, through internal windows, and courts. The treatment rooms on the ground floor overlook the zen garden providing a

connection with nature even in this small urban site. The interior details extend the space of the garden inwards. Free-floating circular mirrors de-construct the walls, reflecting fragments of the inner spaces. A glass floor recreates the dry landscape zen garden within the spa.

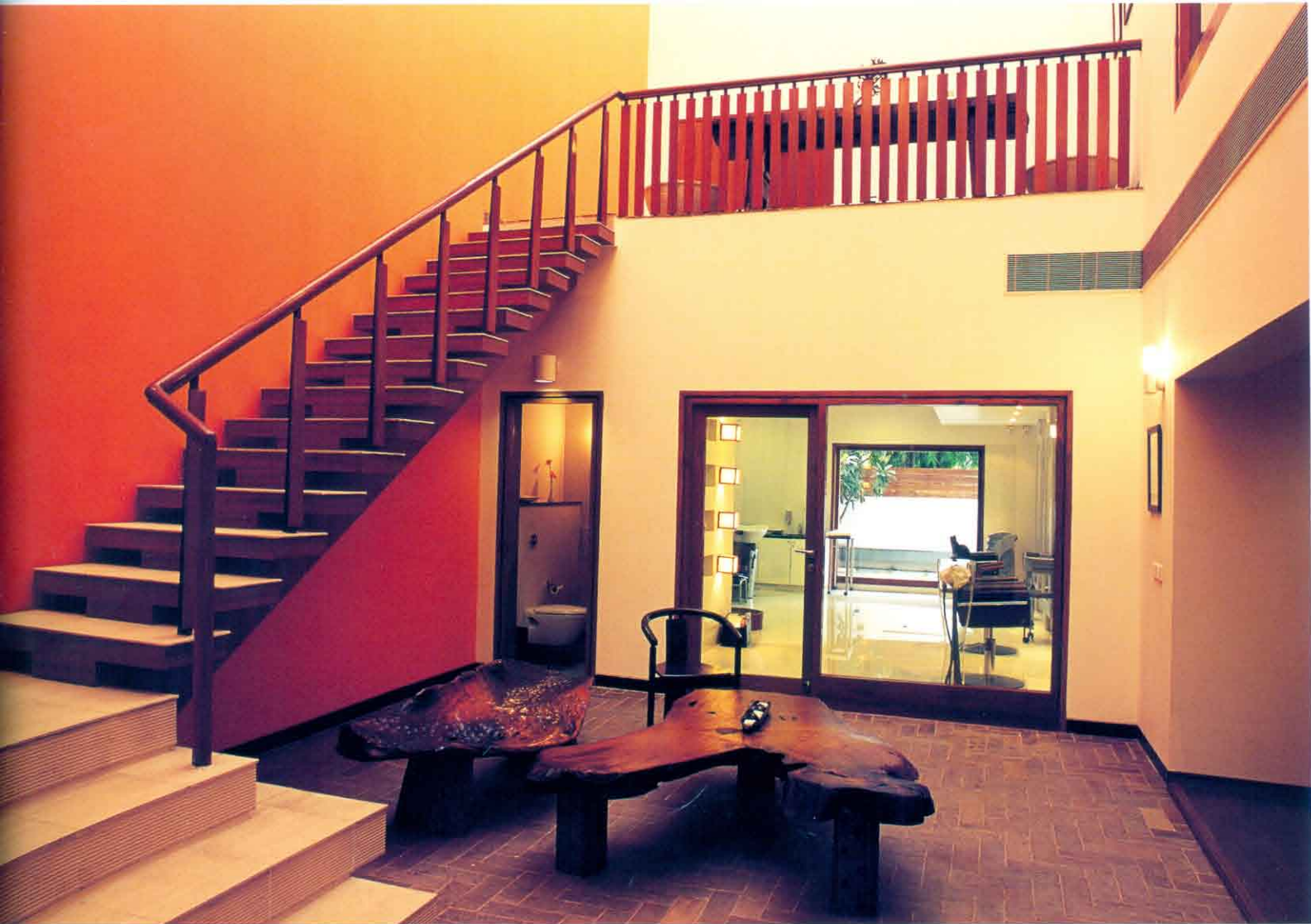
The treatment rooms on the upper floors are reached via a dramatic cantilevered staircase rising through the atrium. The treatment rooms are highly individualistic and minimalistic while retaining the functional aspects of them, Balinese and Malaysian treatments. Creation of a calm and soothing ambience is extended through a restrained palette of materials chosen for their sensory and tactile qualities, with texture and color used to provide luxurious accents. Lighting controls synchronized with treatments heighten the experience. The yoga room is a composition of all white surfaces with a light wood floor. Translucent skylights bathe the space in an even natural white light.





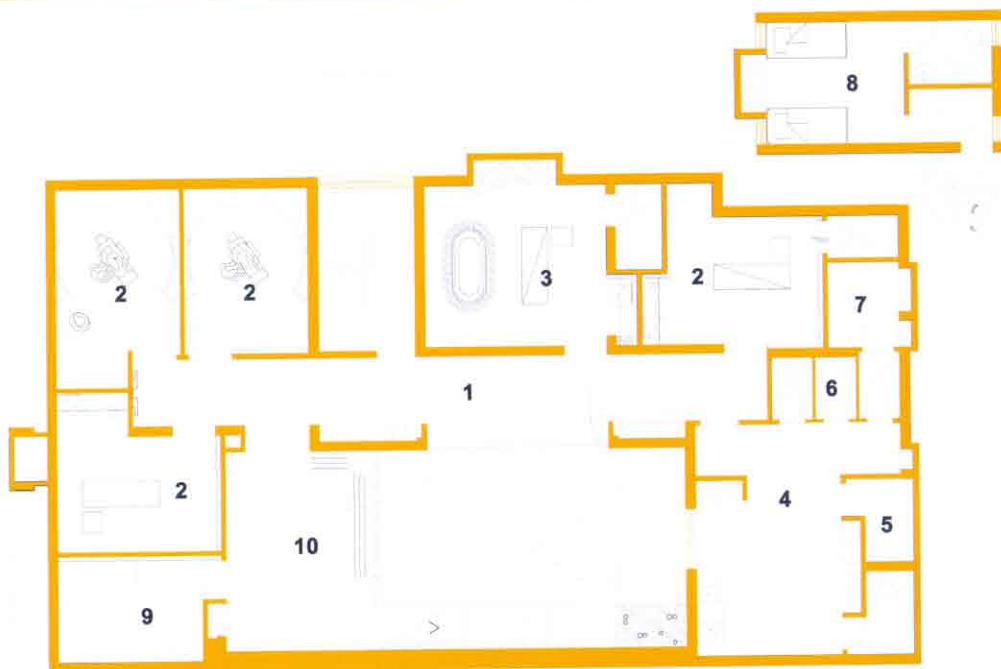
1. FRONT COURT
2. RECEPTION
3. CIRCULATION
4. RECEPTION-2
5. COURTYARD
6. BEAUTY SALON
7. MAKEUP SPACE
8. WAXING ROOM
9. STORE
10. PANTRY
11. STAIRA
12. RARE COURT
13. SERVICES







- 1. CIRCULATION
- 2. MASSAGE / FACIAL ROOM
- 3. YOGA ROOM
- 4. TOILET
- 5. CHANGING ROOM
- 6. SHOWER
- 7. OFFICE
- 8. STAFF ROOM



- 1. CIRCULATION
- 2. MASSAGE/ FACIAL ROOM
- 3. RANI SUITE
- 4. TOILET
- 5. CHNAGING ROOM
- 6. SHOWER
- 7. STEAM ROOM
- 8. STAFF ROOM
- 9. PANTRY/ STAFF AREA
- 10. TERRACE



