

THE HOMES MAGAZINE FOR MODERN LIVING

Livingetc

February 2018 ₹150

INDIA EDITION

DESIGN PROJECT

Make a c(t)ellar statement

All you need
to know about
**SOFT
FURNISHINGS**

**INDULGE THE
VALENTINE
MOOD**
Gifts
Decor
Food
Travel

**EDITED
CHOICE**
Cake Stands
Bowls

*Max your
space*

Sustainability through Passive Design



Sonali Rastogi, Founder Partner, Morphogenesis

- I would like to continue my life-long quest for sustainability through passive design, resource optimisation and contextual identity.
- To live up to our vision of playing a vital role in the discourse of Indian architecture around the world.
- To engage with the student community to both learn from them and to contribute as a senior professional.



Swanzal Kak Kapoor, Co-founder, Saka Architects

Design with Nature

Local context, sustainability, passive design, Reduce and Recycle, close to nature, and bespoke art are high on agenda

- Do less, say more. Mindfulness: We are surrounded by a culture that seduces us into consuming more. I hope to see a shift towards a more thoughtful, conscious design where poetic expression is achieved with a minimum of resources and a deep sensitivity to the environmental impact of the design choices we make as architects.
- Design with nature. Healing spaces: I want to work with natural materials, collaborating with the sun, sky and earth. To create spaces that connect to a 'sense of place' that includes nature, memory, climate and culture, leading to a healing, regenerative quality and a sense of continuity and rootedness, that is critical to the visual and information overload specific to our world today.
- An architecture of Emotion: Sensory textures. Craft. Memory. A key aspect of the spatial experience is the emotional response it elicits from the viewer. I will continue to look closely at the tectonics of place, with a focus on what resonates with the nature of inhabitants, functional typology and lifestyle. I would like to explore our crafts heritage and contemporise design values embedded in context in the year ahead.



N. Mahesh, Principal Architect, Iyer and Mahesh

Reuse of Existing Resources

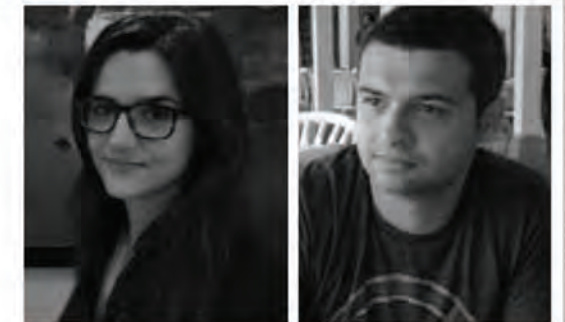
- To increase the use of carbon sink materials such as harvested wood which also reduce the burden on existing demands and further reduce atmospheric carbon dioxide levels.
- To promote and implement reuse of existing resources – even entire buildings (adaptive reuse) to reduce dependence on virgin materials. This will reduce cost, energy and thereby carbon emissions generated by processing new materials/products. For example, a monastic heritage building that I am working on—conceptualised to conserve and reuse as a resort.
- To use traditional techniques, practices and styles to suit the needs of current generations. Popularising traditional techniques will also rejuvenate the age-old crafts which are already on the verge of extinction.
- Discourage unjustifiable use of materials /products. These should also be site-specific and suit the local climate, availability, economics, etc.

Innovation with Materials and Arts



Nisha JamVal, founder, Nisha JamVwal Design

- Collaboration with artists for the creation of bespoke metallic textures.
- To use innovative material combinations within detailing.
- To propose the impossible, and settle for simply a tad less.



Maria Leon and Kayzad Shroff, Partners, ShroffLeon

More Jungalows

- To bring in the outdoors – exotic trees around Japanese style gardens with miniature water bodies, tropical trees, bougainvillea in bright colours and frangipani – all which evoke tranquil, therapeutic luxury and emit oxygen.
- Comfort is the mantra. I wish to go more with cosiness, relaxation and an overall sense of contentment. Large upholstered overstuffed chairs and sofas in rooms and even bathrooms, extra-large dressing tables.
- More bathtubs and jacuzzi's with inbuilt music, rain showers and attached steam rooms – a spa-like feel, and fragrances that transport one to Tahiti islands. Plush sink in king-size beds, mattresses layered with memory foam for a floating feeling.
- I resolve to use solar energy, large natural light, ventilation, and to conserve resources.

