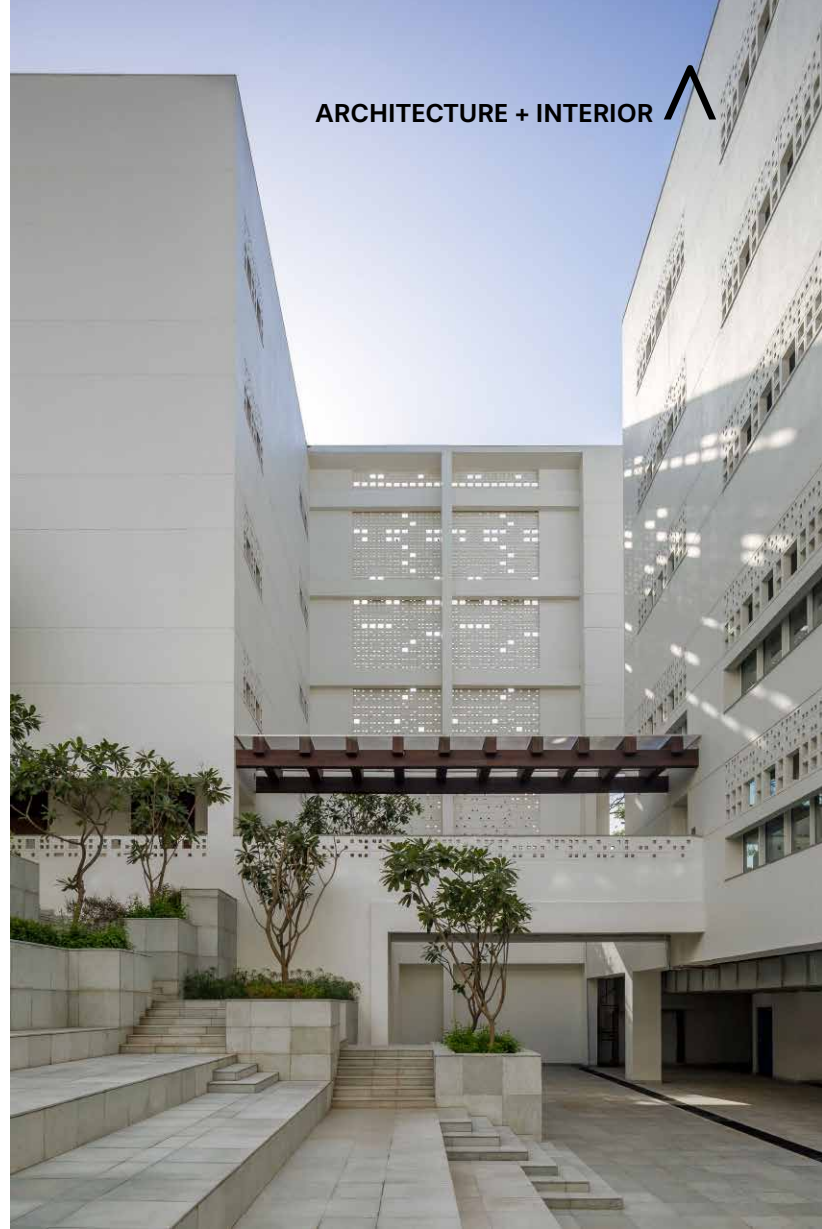


THE BRITISH SCHOOL



The British School

The design of The British School in New Delhi by Morphogenesis enriches the learning experience of its highly diverse student population by providing a contextual richness to their passage through education in India. The unusually diverse student population with over 55 nationalities led Morphogenesis to evolve a socio-culturally inclusive process of detailing the brief.



Adopting sustainable passive design strategies

Two key design strategies were deployed by Morphogenesis to optimise resources. One was to minimise reliance on mechanical systems. Morphogenesis advocated that 50 percent of the school be non-air-conditioned with traditional passive methods used to temper the environment and optimise energy consumption, creating an environmentally experiential learning environment. The second strategy was that of planning the school as a system of courtyards scaled such that majority of them are in shade throughout the year, thus making them effective not only as transition spaces but as extended learning environments. Protecting old trees, creating bioswales, rain gardens and a visible rainwater harvesting system, consciously illustrate demonstrative sustainability.

Creating spaces for social interaction

Breakout spaces have been consciously placed along transition areas, such that the activities they facilitate become an integral part of the student experience, enhancing their holistic socio-cultural awareness and demonstrating the school's outreach philosophy at the same time.



The multifunctional nature of these spaces helped in optimising the built up space of this urban school. Internal courtyards, *chajjas* (deep overhangs) and verandahs provide opportunities for students to engage with the environment and nature. Taking inspiration from traditional *chaupals* (outdoor gathering spaces) in India, some congregation spaces are designed to sit in the shade of mature trees.

PROJECT DATA

Project: The British School
Location: New Delhi, India
Client: The British School Society
Architect Firm: Morphogenesis
Gross Area of the Entire Development: 21,500 square metres
Completion: 2016
Photos: © Morphogenesis, Randhir Singh, Jatinder Marwaha



“Morphogenesis’ design vision for

The British School in New Delhi, found inspiration in the school’s tagline - ‘An International education with an Indian soul’”

– **Manit and Sonali Rastogi**, Founder Partners, Morphogenesis

