

A&B

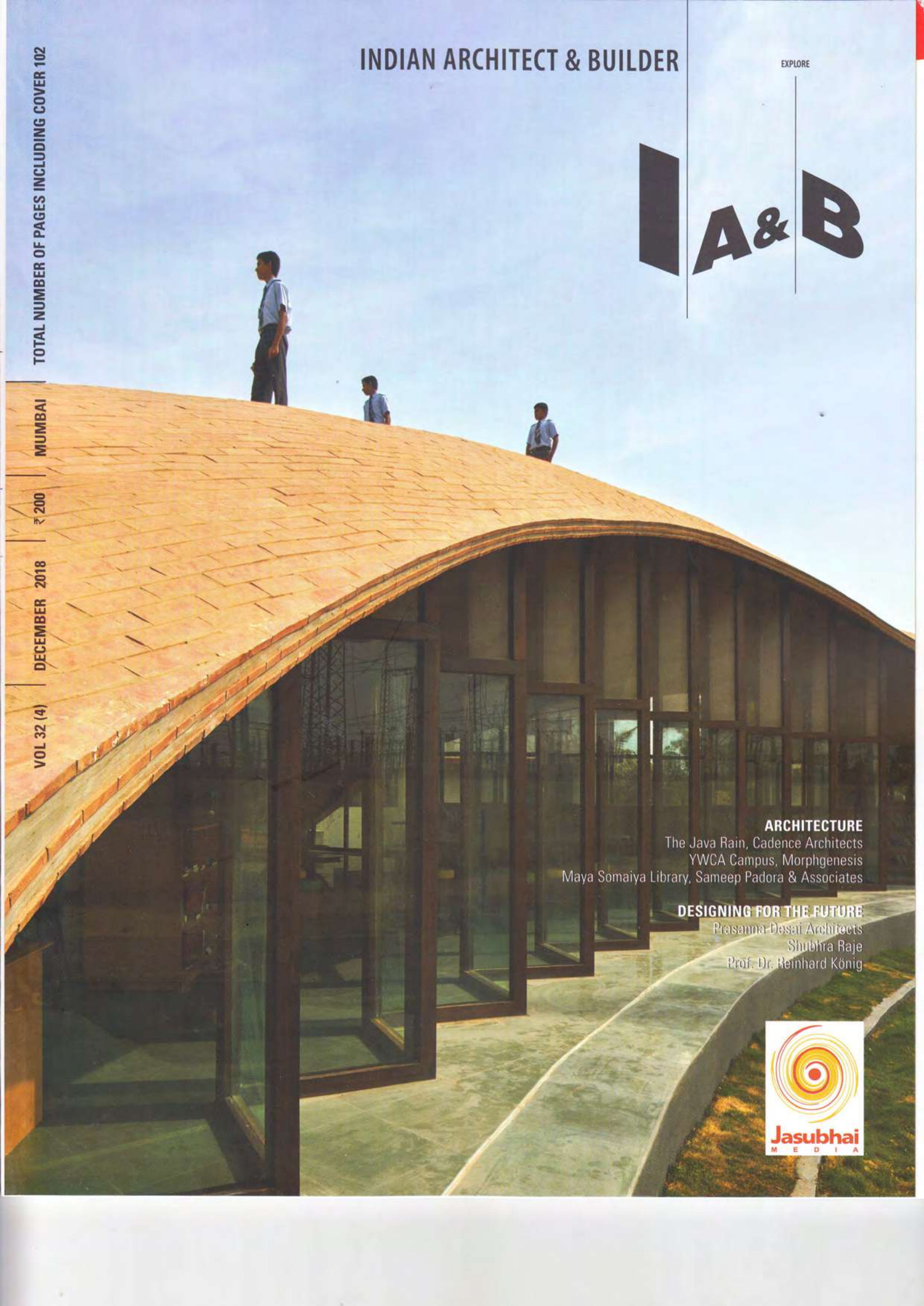
TOTAL NUMBER OF PAGES INCLUDING COVER 102

MUMBAI

₹ 200

DECEMBER 2018

VOL 32 (4)



ARCHITECTURE

The Java Rain, Cadence Architects
YWCA Campus, Morphogenesis
Maya Somaia Library, Sameep Padora & Associates

DESIGNING FOR THE FUTURE

Prasanna Desai Architects
Shubhra Raje
Prof. Dr. Reinhard König





YWCA Campus in Dwarka, New Delhi by Morphogenesis.

Indian Architect & Builder - December 2019

Vibrant spaces for learning and living

YWCA Campus in Dwarka, New Delhi

Designed by Morphogenesis, the YWCA Campus in Dwarka, New Delhi provides its residents and students a safe 'home away from home' space that is open yet private, and invokes a strong sense of belonging.

Text: Sharmila Chakravorty

Images: Suryan/Dang

Drawings: Morphogenesis



Relocating to a new city for work or education, especially for women in our country, can be quite a challenge. There is the question of safety, of the quality and availability of living spaces, and that of alienation in an unknown city. Hostels do serve the purpose to some extent, given that in essence they are transitional spaces that accommodate students and residents for a very specific period of time, repeating the whole process over and over in time. And perhaps by that logic, they are usually poorly designed spaces. But the YWCA Campus designed by Morphogenesis in the burgeoning sub-city of Dwarka in New Delhi is perhaps an attempt to dispel this perception.

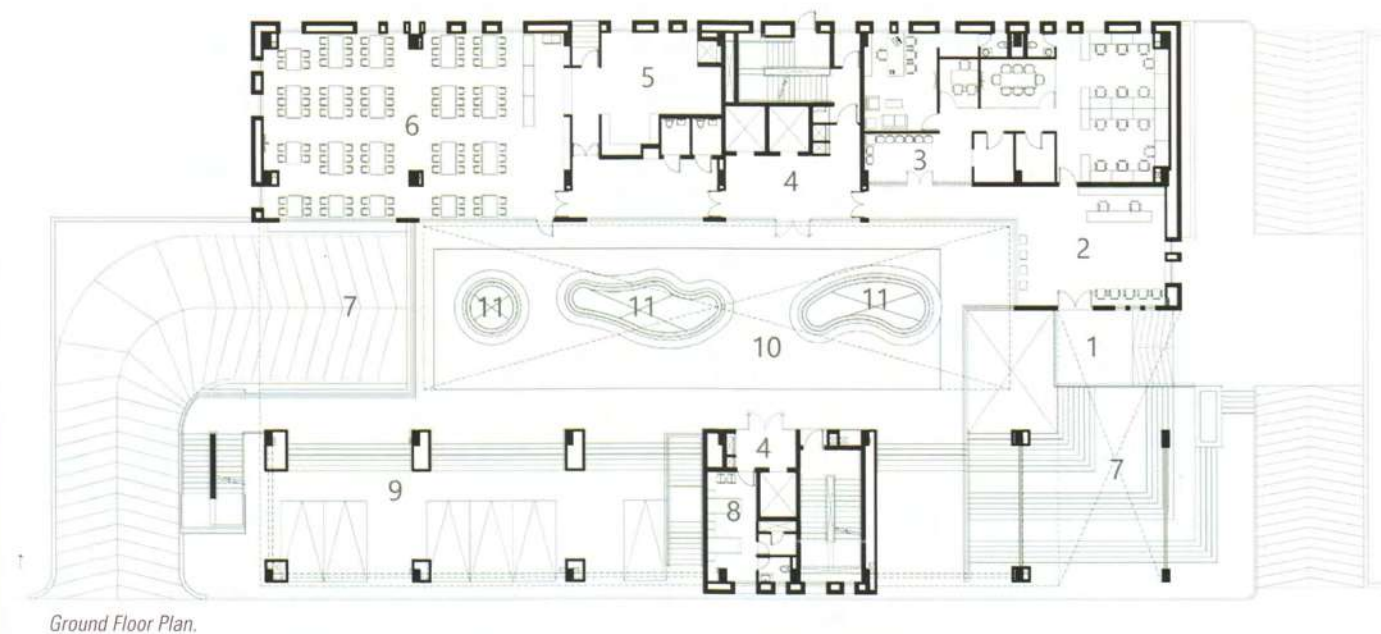
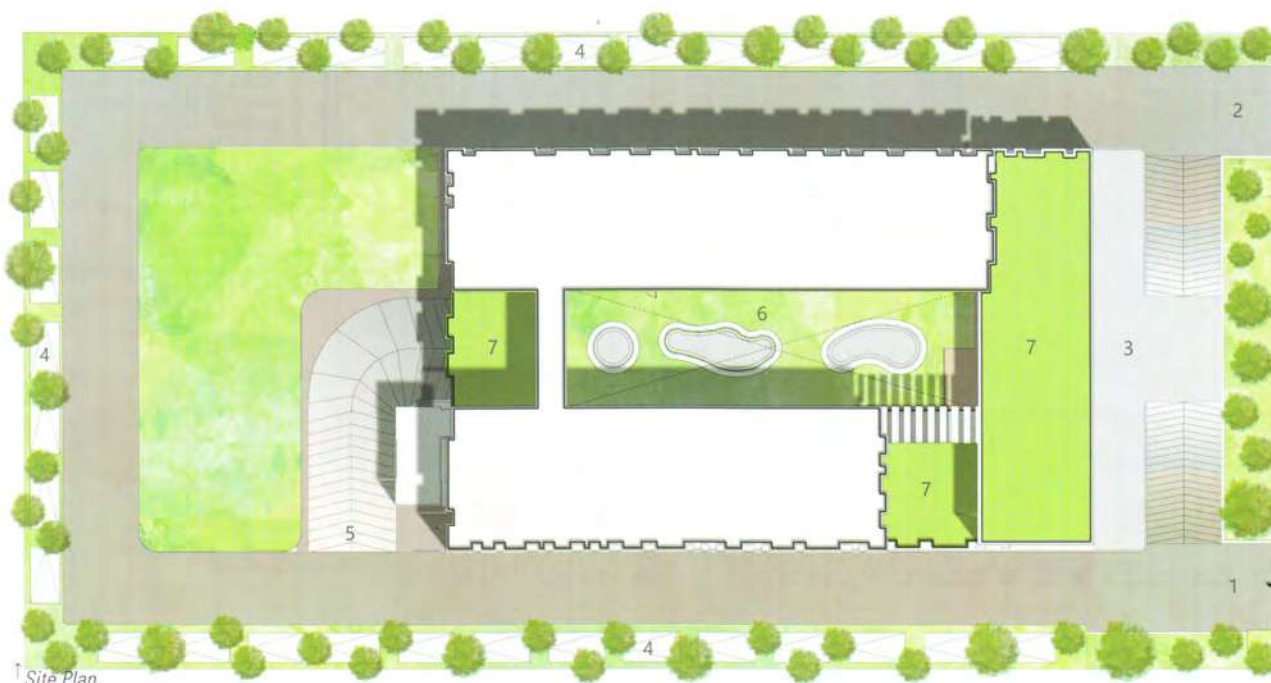
The design brief for the Campus intended for use largely by women was to accommodate two distinct yet interrelated functional

programs – residential facilities for working women, and academic facilities for their vocational training. Responding to these prerequisites and limitations, the design strategy applied focusses heavily on sustainability – in true Morphogenesis style.

Taking cues from the building's immediate urban and social context, the design draws upon Morphogenesis' core philosophy of infusing sustainability at the heart of the design – not as a replaceable part, or for certifications, but as an integral aspect of that dictates every design decision. Sustainability, when viewed through the lens of community, culture, environment, and economics, no longer remains an external factor that needs to be introduced into the design; it becomes the very basis of the design.



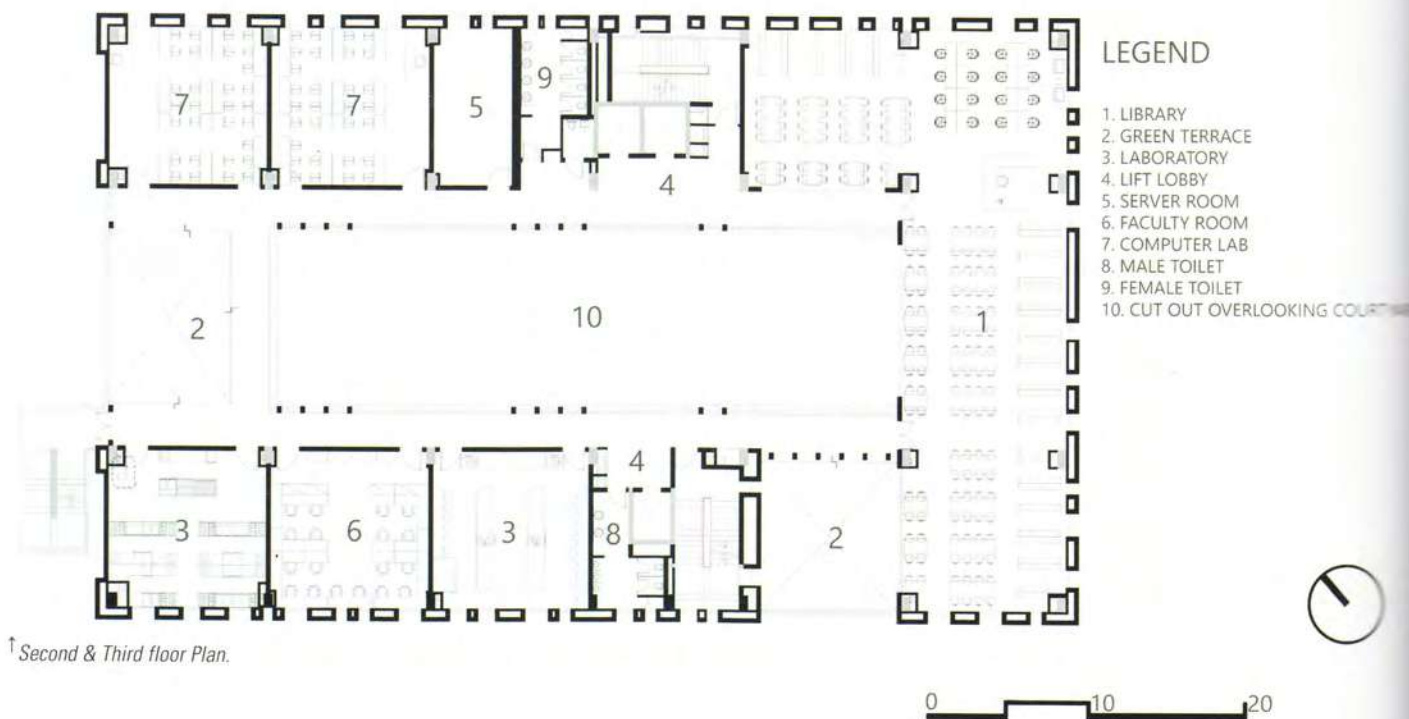
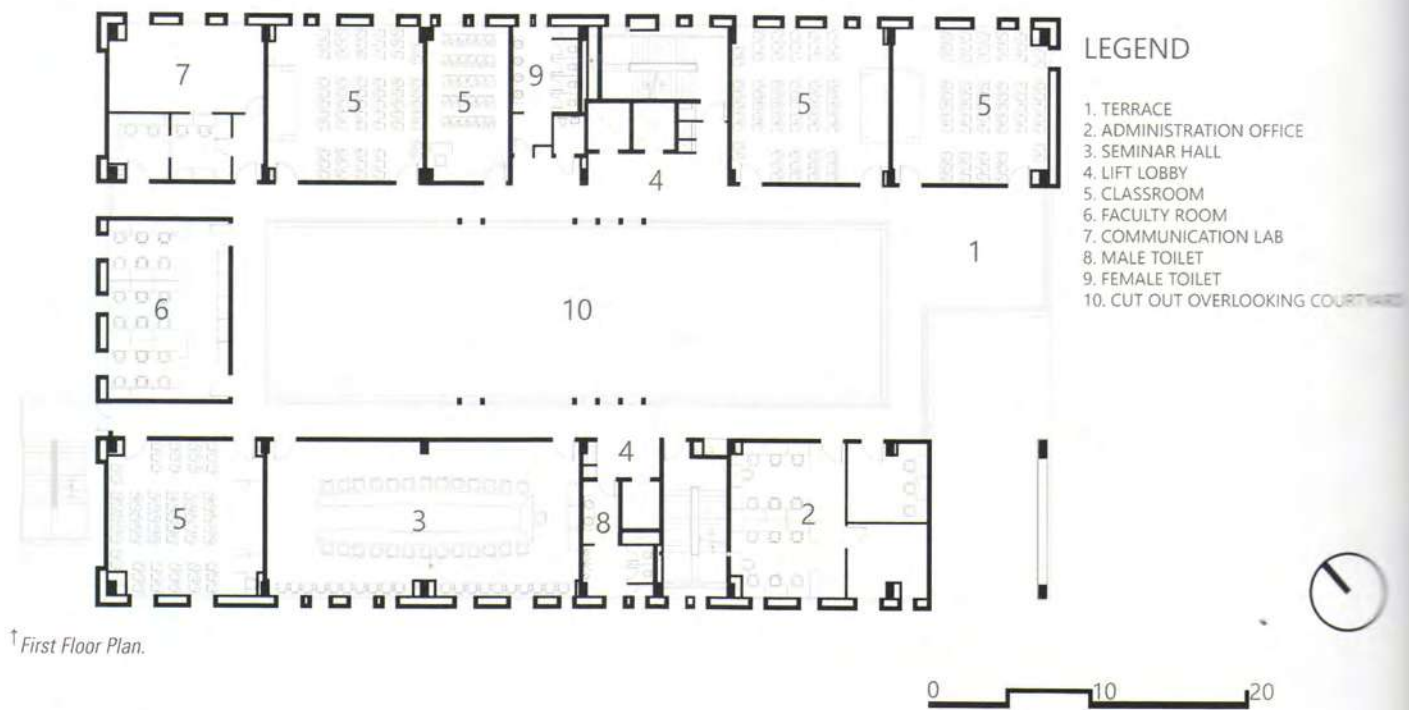
† The design brief was to accommodate two distinct yet interrelated functional programs – residential facilities for working women, and academic facilities for their vocational training.

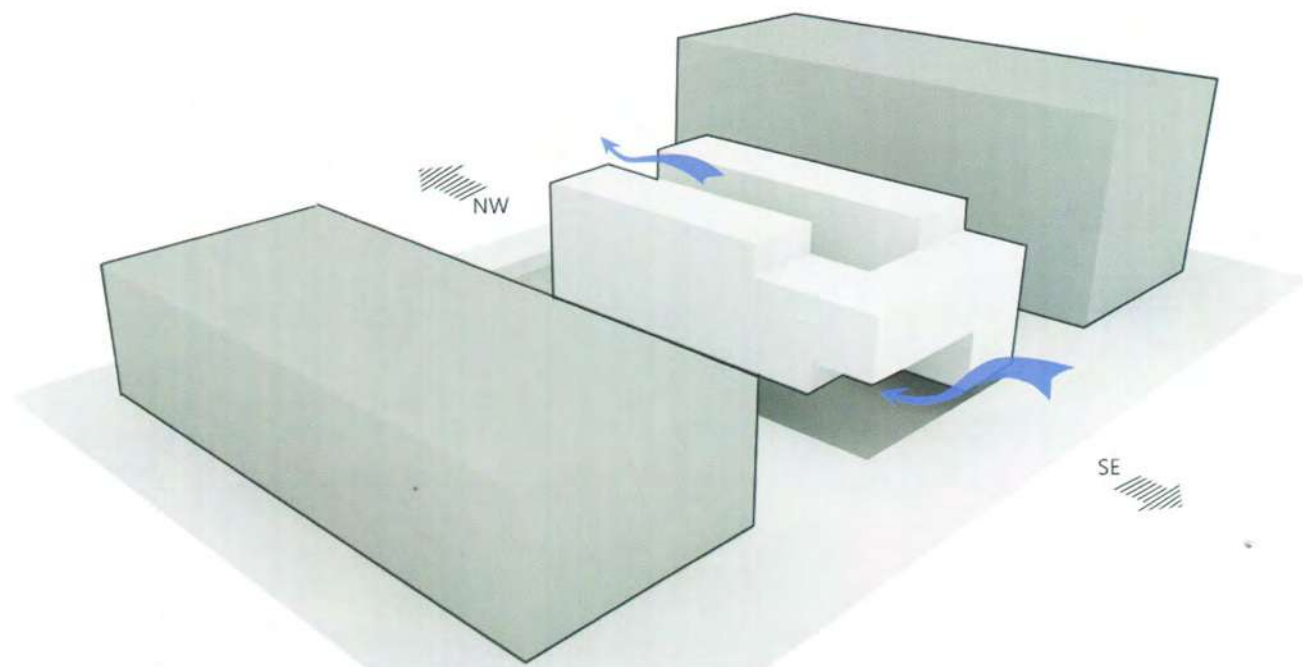


LEGEND

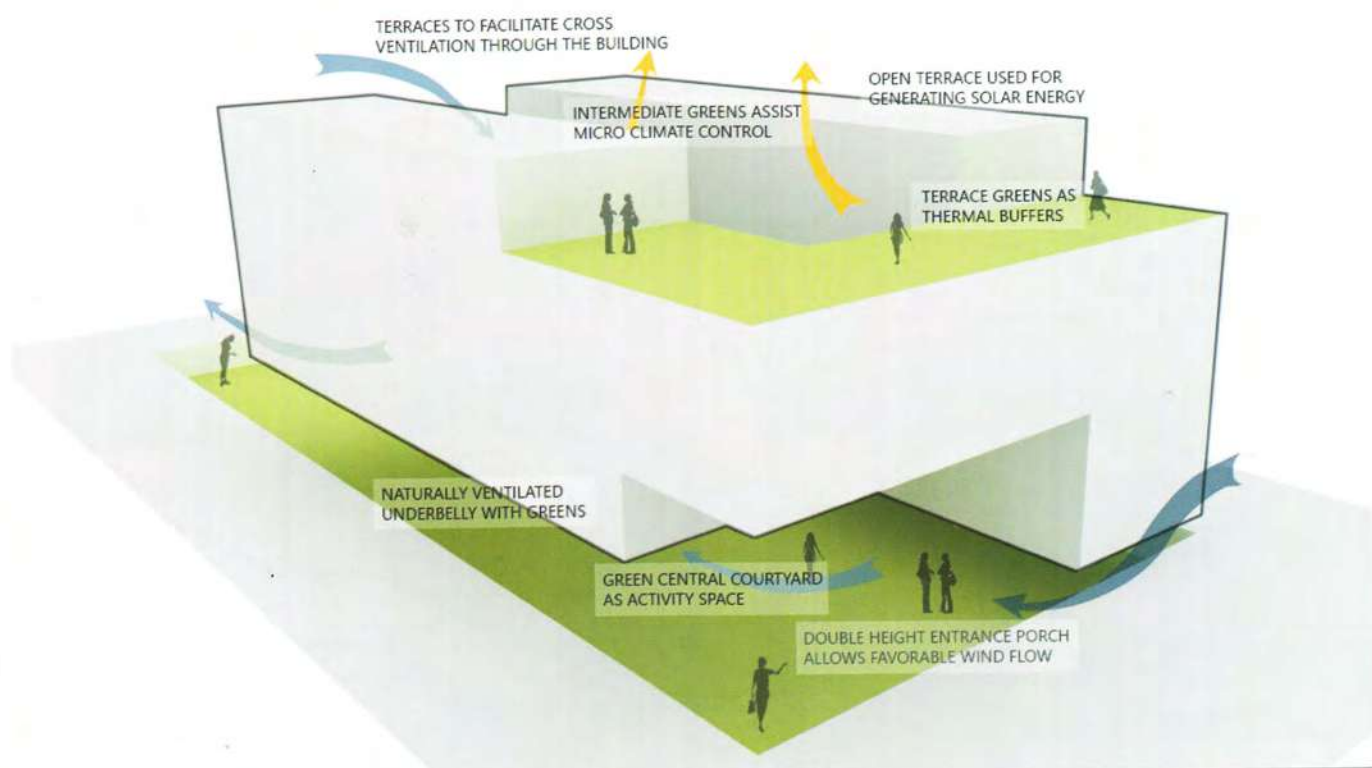
1. FOYER
2. RECEPTION
3. ADMINISTRATION OFFICE
4. LIFT LOBBY
5. PANTRY
6. CANTEEN
7. WAY TO BASEMENT PARKING
8. MEDICAL ROOM
9. EXHIBITION AREA
10. OPEN AIR COURTYARD
11. BASEMENT VENTILATION CUT-OUTS

0 10 20

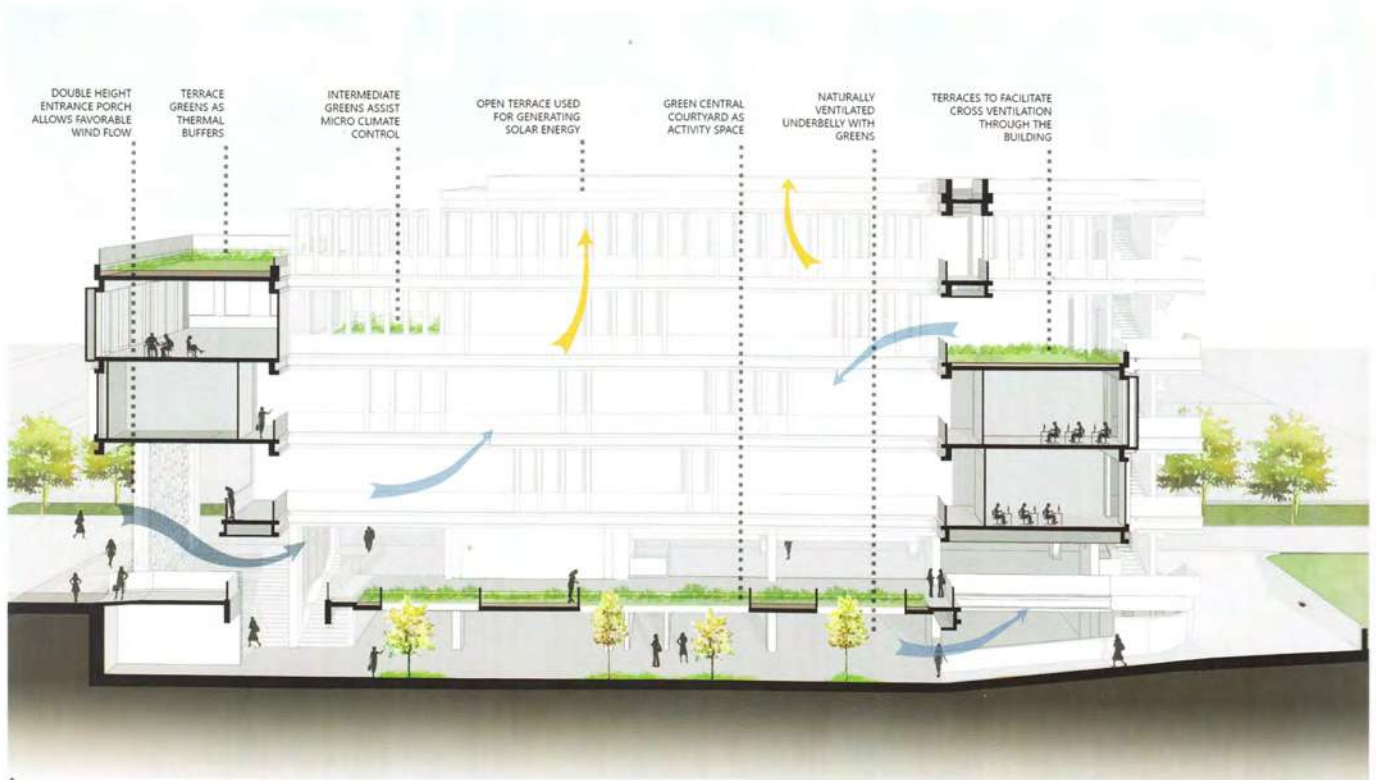




↑ Punched openings to facilitate wind movement.



↑ Cross Ventilation – Massing.



↑ Cross Ventilation – Sectional View.



↑ Anticipating that the hot-dry climate might make the use of outdoor spaces throughout the year difficult, the architects set up a microclimate that incorporates traditional, vernacular, passive climate-control tools, reduces dependency on mechanical methods of cooling.



[†] The use of heat reflective paints, efficient light and low-flow water fixtures further reduce operational and maintenance costs.