



see

think

inspire

reflect



9

Architecture

04
mins. read



STIR > SEE > FEATURES

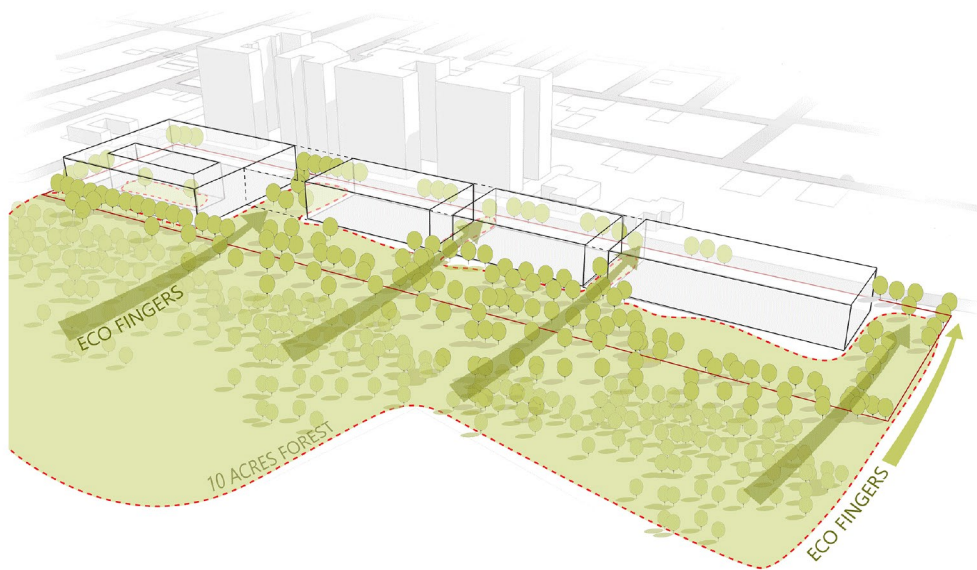
Morphogenesis builds the sustainable Lalit Suri Hospitality Institute in brick

Morphogenesis keeps its core principles in mind through dual-functioning spaces and passive design strategies for the Lalit Suri Hospitality Institute in Haryana.

by [STIRworld](#) | Published on : Oct 14, 2020



Morphogenesis, founded by Manit and Sonali Rastogi, has added yet another institutional project to their impressive portfolio containing a diverse range of projects and typologies. Their brick-built design for The Lalit Suri Hospitality Institute in Faridabad, Haryana, aims to provide a world-class learning experience to aspiring students who will continue their careers at the LaLit Hotels scattered across [India](#).



Morphology of the project
Image: Courtesy of Morphogenesis

About the project, architecture firm [Morphogenesis](#) points out “Education in India typically takes a socialist approach, which means it needs to be made available to all. Thus, available resources need to be stringently managed to make this approach monetarily

viable. With the Lalit Suri Hospitality Institute, the design challenge is the imparting of education in the service of luxury hospitality, whilst being set within a modest institutional framework”.

Similar Articles

Architecture
04
mins. read



[Anupama Kundoo creates a nurturing space for children with Sharana Daycare Facility](#)

by Meghna Mehta
Sep 23, 2020

Design
12
mins. read



[Made in India: Curated by Anubhav Gupta](#)
[Colourful tapestries of functional design](#)

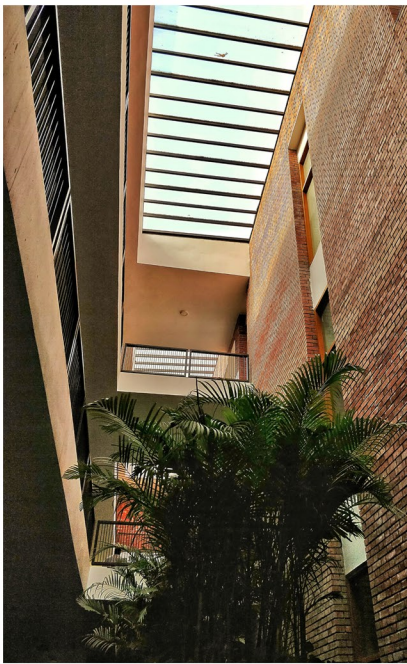
by Jincy Iype
Sep 14, 2020

Architecture
10
mins. read



[The business of spatiality](#)

by STIRworld
Jul 18, 2020



Lightwells naturally illuminate the campus

Image: Courtesy of Morphogenesis

The 2,50,000 sqft building is currently under construction, considerably finds itself a place within five acres of intact forested land. Strategic planning around the dense neem tree grove ensued a generous built form that entwines around and integrates the tree clusters, preserving the landscape and adopting natural shade into its semi-open spaces.



The design incorporates the existing trees on site

Image: Courtesy of Morphogenesis

Each section of the campus has been designed to bear dual functions - inspired by the institute's vision of hospitality skills development - one as an educational learning field and the other as a context conducive to the experience of luxury hospitality. The project addresses versatility in space-function as a way to optimise resources while practically exposing students to operational and managerial aspects of their profession.



Courtyards keep the buildings well ventilated

Image: Courtesy of Morphogenesis

This functional flexibility spreads across the entire campus, with cafeterias that double as F&B outlets where students can eat and learn service, and kitchens that allow students to cook and hone their service skills. Even the hostel is built as a pseudo hotel where public gathering spaces have been designed to be serviced like congregational spaces in hotels.

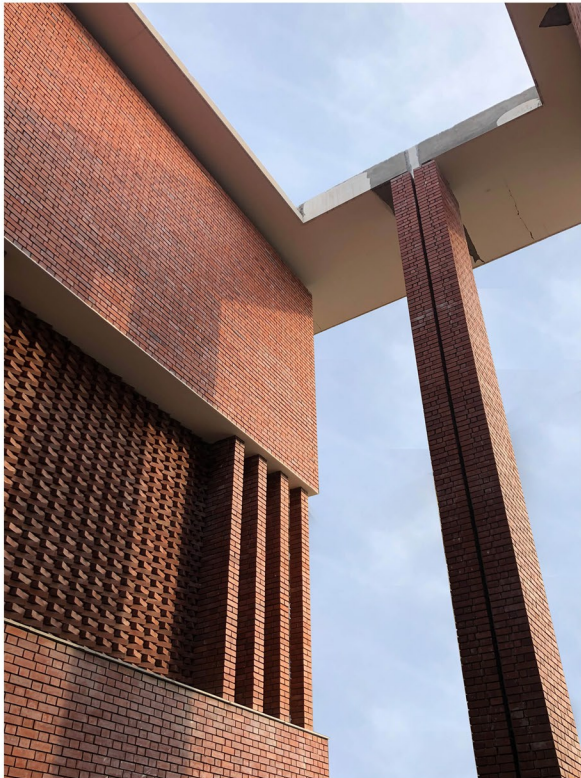


Functional flexibility spreads across the entire campus

Image: Courtesy of Morphogenesis

A modular approach to the design further enhances the flexibility and multiplicity of spaces and operations with each room designed as a multiple of a single optimised bay module. Open areas are composed to work as spill-over spaces to promote interaction among the inhabitants.

Sustainable design forms the basis of every one of Morphogenesis' projects and this fundamental design solution was reflected in the light-wells, courtyard planning, latticework and thermal buffering in the institution. A micro-climate was created using initial planning principles to reduce mechanical energy dependencies and optimise resource consumption, resulting in a design that is Net Zero on energy and water with an EPI of 58kWh/sq.m./yr.



Brick was used as the primary material

Image: Courtesy of Morphogenesis

Brick was a suitable material choice for this design, a nod to conventional institutional buildings in India. The material was also a natural economical choice, being locally sourced and produced. It has also been incorporated reinventions of the traditional *jaali*(lattice work) and *jharoka* as different forms and levels of fenestrations in the building.



Detailing of the brick *jaalis*
Image: Courtesy of Morphogenesis

Morphogenesis prides in their work as being 'rooted in sustainability, optimisation, uniqueness and liveability', four inherent parameters that establish the enquiry process that shapes their architecture. The Lalit Suri Hospitality Institute expresses these key ideas as dual-functioning spaces, passive sustainable design strategies, and a muted material palette that provides a campus that is progressive in style and content.

(Text by Ankitha Gattupalli, intern at stirworld.com)

Comments

what do you think...

Post

Educational Architecture

Educational Institute

Faridabad

Hospitality industry

India

Institution Design

Lalit Hotels

Lalit Suri Hospitality Institute

Morphogenesis

Sustainable design

About Author

stir

see. think. inspire. reflect.

STIRworld

Editorial team of STIRworld